

ABOUT US

PRT Group was formed in early 2010 with the sole interest of the design, structural, and project management industry. It is a small local engineering firm which provides creative solutions to a few clients. PRT opens their selves to diversity with the willingness and inspiration to tackle the most unique or changeling projects. As a group they believe in environmentally conscious design, quality, safety, meeting client’s needs, respect and valuing people and teamwork. The team consists of three intellectual, fast adapting and motivated junior engineers, who embrace the highest standards of personal and professional integrity.



PRT GROUP

1 Regiment Road
St John’s Newfoundland
709.690.0689 (ph)

PRT GROUP



ENGINEERING SERVICES

Structural
Geotechnical
Project Management

VANESSA PYNN

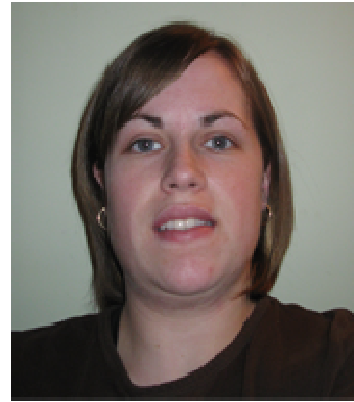


During Vanessa's cooperative education and Memorial University she has obtained high quality academic skills along with valuable work experience from the many diverse work terms. Through both work and university she has displayed her ability to be determined, motivated, organized, and quick learning. During her work she has developed skills in such fields as cost estimating, research, construction and inspecting.

Vanessa's Professional Experience Includes:

- Cost estimating for:
Peter Kiewit Sons quantity take offs of concrete and earthworks for large scale projects such as VALE INCO Long Harbour Processing Plant.
- Research for **Centre for Marine CNG** on natural gas storage solutions for compressed natural gas. Extensive research on existing and new solutions.
- Inspections for water mains with **BAE Group**. Conducted the water main leak detection program. Tested for and pinpointed leaks with specialized leak detection equipment. Coordinated program progress with client.
- Project Management and Construction with:
Bell Aliant Odyssey Project: Responsible for installation of HSPA equipment on towers/rooftops. Wrote an Installation manual to aid with training. Reviewed rooftop drawings.
Magna Contracting: Responsible for aiding project manager in daily duties, shop drawings, closing tenders, communication with subcontractors, and clients, and responsible for all safety inspections, documentation, and ongoing issues.

ASHLEY REX

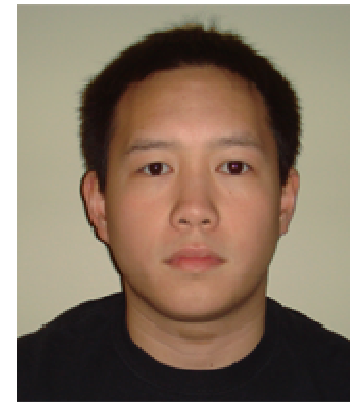


Throughout the course of the engineering program Ashley has gained valuable experience in various fields including municipal, geotechnical and materials engineering. Ashley's organizational skills, personable character and work ethic make her an important component of the PRT Group. She has been described by previous employers as being a team player who is exceedingly dependable and enthusiastic when assigned new tasks.

Ashley's professional experience includes:

- Geotechnical and Materials Engineering with **Stantec** in St. John's. Responsible for compression testing of concrete, complete sieve analysis and asphalt testing.
- Materials Engineering with **Department of Transportation** (Soils Division) in St. John's. Project required testing the asphalt of both existing and newly paved roads. Conducted analysis with computer systems such as; ArcGIS, View and Edge Dropoff for measuring the ruts of the roads.
- Conducted research with **C-CORE** for the offshore oil and gas industry. Work with MATLAB predicting collision probability between offshore vessels and icebergs. Performed experimental work and analysis of with polycrystalline ice at the NRC-IOT.
- Municipal Engineering with **SGE Acres** in Clarendville. Research work, preliminary drafting and cost estimates and job summaries.

EDWIN TSUI



Edwin is a well-rounded addition to the PRT Group. His six work term experiences through the Civil Engineering program at Memorial University have provided him with many different and diverse work experiences and opportunities. He is technically proficient with many different pieces of software and approaches his work with an energetic and enthusiastic mindset. Previous employers have described him as efficient and resourceful.

Edwin's professional experience includes:

- Construction work site experience as an electrician apprentice with **City- Lite Electrical Inc.**. Worked onsite for the construction of the Tommy Sexton Center from start to finish.
- Cost estimating, preliminary drafting, municipal design and surveying with **Al-Terra Engineering Ltd.** in Red Deer, Alberta.
- Project Management with the **St John's International Airport Authority**: Responsible for the selection, installation and integration of the automated pay-on-foot parking system. Assisted and aided with projects pertaining to both land and airside operations.
- Maintained and formatted statistical data and reports with respect to Health, Safety, Environment and Quality with **Husky Energy**. Performed research relating to health, safety and environment for onshore and offshore work.

OUR GOAL

Our goal at PRT Group is to provide innovative engineering solutions to our clients with professional engineering services in the fields of structural, geotechnical and project management which exceed our client's expectations.